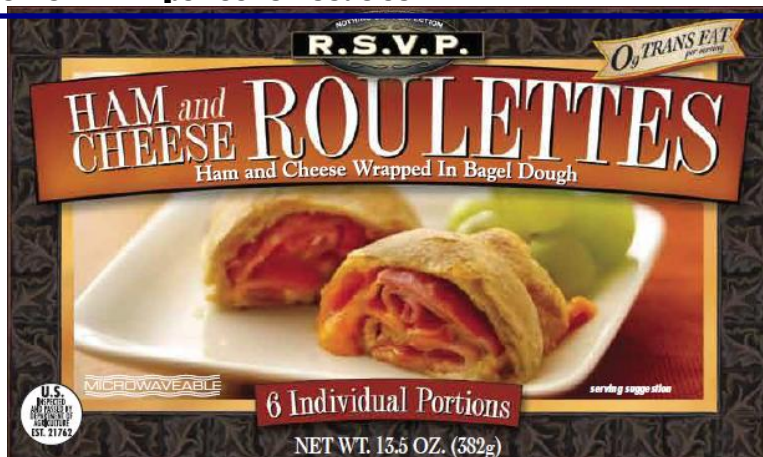


# Perfection Foods Company

Philadelphia, PA 19140 ○ [www.perfectionfoods.com](http://www.perfectionfoods.com)



## 6 Count Ham & Cheese Roulette

### Ingredient Statement

#### Dough:

Bleached enriched flour (wheat flour, malted barley, niacin, iron, thiamine mononitrate, riboflavin, folic acid), dextrose, sugar, soy oil, salt, mono-diglycerides, soy flour, corn starch, contains 2% or less of: monocalcium phosphate, calcium stearoyl lactylate (CSL), ascorbic acid, potassium iodate, soya lecithin, L. Cysteine, natural and artificial flavor.

#### Filling:

Ham (Water, Salt, Dextrose, Sugar, Sodium Lactate, Sodium Phosphates, Spice Extractives, Sodium Diacetate, Sodium Erythorbate, Sodium Nitrate, Oleoresin of Paprika.) American Cheese (Reduced Fat American Cheese (cultured milk, salt, enzymes), Water Nonfat Dry Milk, Cream, Sodium Phosphate, Cheddar Cheese (Cultured milk, salt enzymes), Salt, Lactic Acid.

**Contains: Soy, Wheat, Milk**

### Cooking Instructions

Remove hors d'oeuvres from box and plastic tray and place on non-stick baking pan ½ inch apart. Bake on center rack of oven approximately 15 minutes or till golden brown

Conventional Oven:

Pre-heat to 350° F Bake 15-20 minutes

Convection Oven:

Pre-heat to 350° F Bake 12-15 minutes

For food safety and quality, follow cooking instructions. Product may be very hot after cooking. Cooking appliances vary in efficiency; time and/or temperature may need to be adjusted to achieve 165° F product temperature.

### Bagel Dogs   Refrigerated   Frozen

2	25 seconds	45 seconds
4	45 seconds	80 seconds
6	60 seconds	120 seconds

**Shelf Life: 12 months in frozen condition (-10° F)**

# 6 CT Ham & Cheese Roulette #11400

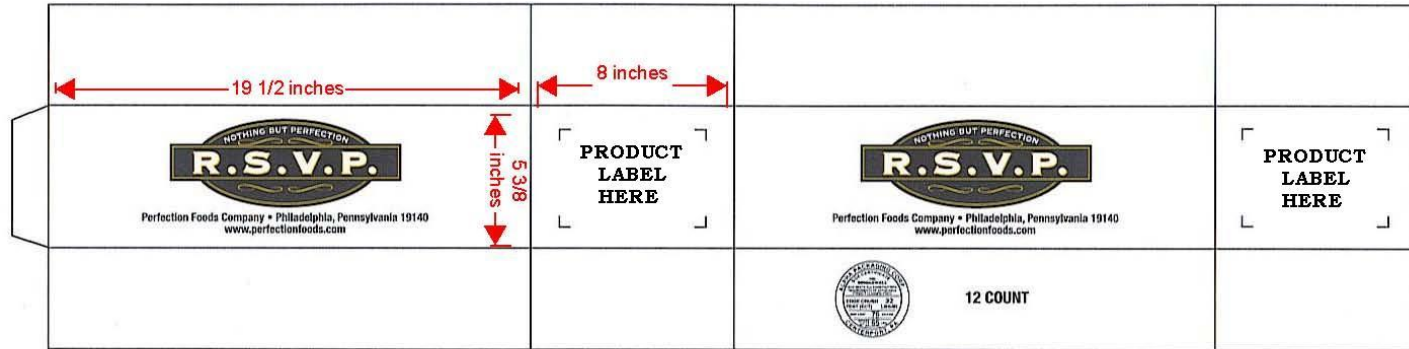
**Packing information:**

Unit UPC Code	Item	Piece/Unit	Units/Case	Unit Net Wt.	Unit Dimensions			Case Dimensions			Case Cube	Net Case Wt.	Pallet Qty		
					L	W	D	L	W	D			TI	HI	
7-35199-11400-8															
<b>Master UPC Code</b> 7-35199-11401-5	6 CT Ham & Cheese Roulette	6	12	13.5 oz	7.5	4.5	1.75	19.5	8	5.3		10.125 lbs			

**Manufactured by:**

Perfection Foods Company, Inc.  
Philadelphia, Pa 19140 U.S.A.  
[www.perfectionfoods.com](http://www.perfectionfoods.com)

**Master Carton**



COLOR: GCM1 BLACK 90 AND GCM1 GOLD

6-29-06

**Product Code Date System**

XXYPERBXXX

XXX - Julian Date

Y - Fiscal Year (Year-1)

PER - Perfection

BXXX - Batch Number

Ex: 1946PER0105